

We are inclusive, confident, and enterprising learners who are brave, curious, optimistic, and kind. We are ready to embrace the future!



**LEARNING**  
ACADEMIES TRUST

FRIDAY, 3<sup>RD</sup> OCTOBER 2025

CONTACT US ON



01752 225314



<http://hydepark-inf.plymouth.sch.uk/>

<http://www.hydeparkjuniorschool.co.uk>



office@hydeparkprimary.co.uk

### Update from Mrs. Jones

Dear Parents, Guardians, and Carers,  
It has been a truly wonderful fortnight of discovery and growth! It's a joy to see our pupils settled and fully engaged in their learning across the school.

Our children have been busy mastering new skills and core subjects:

**Reception** has been exploring new friendships and creating wonderful stories (Goldilocks was a hit!).

**Year 1** has been flexing their artistic muscles with sketchbooks and mastering number comparison in Maths (with great logic like Nova's "5 is equal to 5").

**Year 4** has been writing fantastic imaginative stories, while

**Year 5** has focused on teamwork and friendships through outdoor games like Capture the Flag.

**Year 6** has been confidently developing mathematical thinking by exploring number partitioning.

We are incredibly proud of their enthusiasm and curiosity!

### Community Focus & Key Dates

**Thank you** to everyone who attended our first **PTFA meeting** yesterday evening! It was inspiring, full of fresh ideas, and highlighted a renewed focus on parental and community engagement. We encourage all parents to attend future meetings; your input is vital to our schools' continued growth and strength this year.

As we move forward, please note these key events:

**Black History Month** has begun! We are excited to mark this important month under the theme, "**Standing Firm in Power and Pride**".

Our **Open Evening for prospective parents** is on **Thursday, October 9th at 4:00 PM.**

Thank you for your continued support as we work together to make this a brilliant year of growth and discovery for our pupils. Have a wonderful and safe weekend.

### Year 1 Masters Math Comparison!

In Maths, Year 1 have been busy comparing numbers using the **greater than (>), less than (<), and equal to (=) symbols**. The children thought carefully about the objects, groups, and numbers they were comparing, explaining what they had noticed before using the mathematical symbols to write a number sentence.

We were impressed by their thoughtful explanations, like this one:

"I notice that the 2 groups are the same because they both have 5. 5 is equal to 5." – **Nova, Potter Class.**



### Fun Fact

Did you know you only need 23 people in a room for there to be a 50% chance that two of them share the same birthday? It sounds impossible, but it's true!

KIND HANDS, KIND FEET, KIND WORDS, KIND ACTIONS



We are inclusive, confident, and enterprising learners who are brave, curious, optimistic, and kind. We are ready to embrace the future!

## International Day of Peace Celebration: Special Visitor!

As part of our **International Day of Peace** celebrations, Years 2 and 5 had a special visit from **Colonel Simon Horne!** Colonel Horne spoke to us about his important work in **peacekeeping in Sudan**, giving our pupils a fantastic real-world perspective on global peace and conflict resolution.



### Understanding the International Day of Peace

The International Day of Peace, or **World Peace Day**, is a United Nations-sanctioned day observed globally every year on **September 21st**. It's a special occasion dedicated to **strengthening the ideals of peace** both within and among all nations and peoples.

It's important because the UN asks for a **24-hour ceasefire** of all hostilities and violence worldwide. Beyond ending conflicts, the day serves as a powerful call to action for everyone; from peacekeepers to students; to address issues like inequality, discrimination, and hate speech, recognising that true peace begins with respect and justice in our daily lives. It's a reminder that building a peaceful world is a shared responsibility.

## Year 3 Welcomes Clean Our Patch!

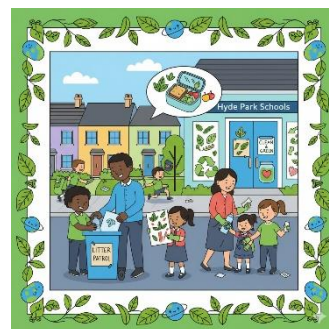
Year 3 recently welcomed **Clean Our Patch** for an inspiring assembly all about looking after our planet! The visitors taught us simple but powerful ways to help our environment, such as **litter-picking, recycling, and spreading the message through posters**. The children were enthusiastically challenged to do their part to keep our community clean and encourage others to join in!



### Be a Green Hero!

These are simple, direct challenges children can take ownership of:

- **The Zero-Waste Lunchbox Challenge:** For one day next week, try to pack a lunch that produces zero waste (no plastic wrap, no disposable bags, and everything either reusable, compostable, or recyclable).
- **Design a "Litter Patrol" Poster:** Use the inspiration from the assembly to design a bright, colourful poster at home. Display it in your window or share it with the school via ClassDojo to encourage neighbours and family to use bins.



KIND HANDS, KIND FEET, KIND WORDS, KIND ACTIONS

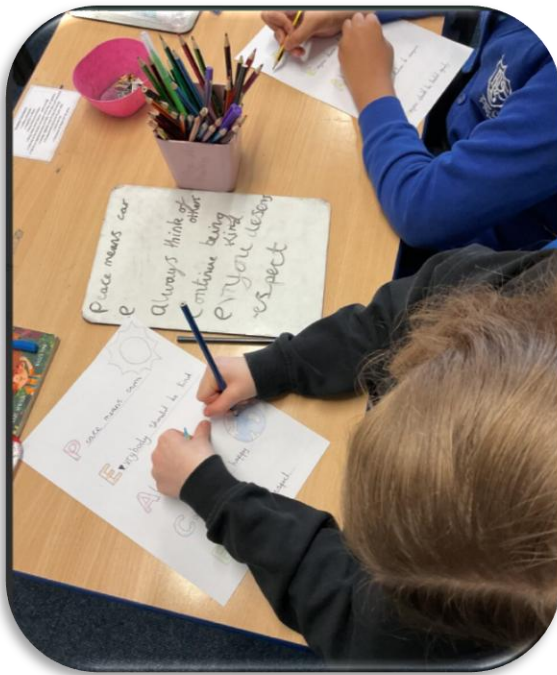


We are inclusive, confident, and enterprising learners who are brave, curious, optimistic, and kind. We are ready to embrace the future!

## Year 6 Celebrates Peace and Unity

Year 6 marked **International Day of Peace** with a range of thoughtful and creative activities. The children explored what peace means to them and how it is represented across different cultures.

They wrote **acrostic poems for "PEACE,"** reflecting their ideas of kindness, unity, and hope for the future. In addition, they created **peace symbols incorporating different languages,** beautifully showing how the message of peace is shared around the world.



## Reception: Friendship and Storytelling!

The Reception children have continued to explore new friendships. The children have created wonderful stories together and re-enacted known stories.



## Celebrating Rose's Jive Success!

We are thrilled to celebrate Rose from Attenborough Class, who recently achieved an outstanding result in a major competition! Rose showcased her talent by securing 6th place in the Under 9s Jive category at The League (Southern Area) competition in Reading. What a fantastic achievement!



## Celebrating Our Pupil Achievements!

We would love to celebrate all the amazing activities our pupils get up to outside of school, not just sports! If your child is involved in any kind of hobby or activity, from football and gymnastics to playing a musical instrument, dancing, or even building with LEGO, please send a short description and a picture of them in action to the admin team.

This is a fantastic way to celebrate the children's hard work, passion, and dedication.

**Please remember:** We cannot publish any photos that include other children. If you send in a photo, please make sure only your child is visible.

Thank you for your help in celebrating all of our stars!

KIND HANDS, KIND FEET, KIND WORDS, KIND ACTIONS



We are inclusive, confident, and enterprising learners who are brave, curious, optimistic, and kind. We are ready to embrace the future!

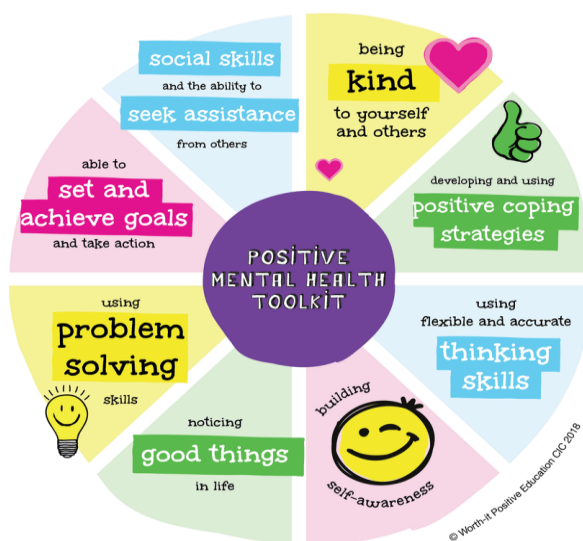
## Mental Health and Well-being Week

At Hyde Park Schools, we place great importance on supporting the mental health and well-being of our pupils, families, and staff. As part of this commitment, we follow key areas outlined by the NHS to help everyone lead a happier and healthier life. These include **staying active, staying connected, learning new skills, giving to others, and paying attention to the present moment.**

During Mental Health and Well-being Week, we encourage everyone to incorporate these practices into their daily routines. Here are a few simple ways this can be done at home:

- **Stay active:** Try a family walk, bike ride, or even a short home workout to get everyone moving.
- **Stay connected:** Spend quality time talking with family members, sharing stories about your day, or playing a fun game together.
- **Learn something new:** Whether it's a new recipe, a craft project, or learning a few words in another language, discovering something new can boost confidence and mood.
- **Give to others:** Encourage acts of kindness, such as helping a sibling with homework, writing a kind note, or even making a small gift for someone.
- **Be mindful:** Take a few moments each day to sit quietly, focusing on breathing or noticing the things around you, to help reduce stress and improve well-being.

We believe that by encouraging these practices at school and at home, we can help everyone in our community feel supported and cared for.



## Safeguarding: Our Top Priority

At Hyde Park Schools, safeguarding is at the heart of everything we do. We are committed to ensuring the safety, well-being, and protection of all our pupils, creating a secure environment where every child can thrive. Our dedicated staff are trained to recognise and respond to any concerns, and we follow strict procedures to maintain a safe school community.

Parents play a vital role in supporting this effort. Here are some ways you can help:

- **Open communication:** Encourage your child to talk about their day, and listen for any concerns they may share.
- **Online safety:** Monitor your child's online activity and talk to them about how to stay safe when using the internet.
- **Know the signs:** Be aware of changes in your child's behaviour, mood, or friendships that may indicate they need support.
- **Stay informed:** Engage with school updates and attend any safeguarding information sessions we offer to stay up to date on how we protect your children.

Together, we can ensure that our school remains a safe and nurturing environment for all pupils. If you ever have any concerns, please do not hesitate to contact us.



KIND HANDS, KIND FEET, KIND WORDS, KIND ACTIONS



We are inclusive, confident, and enterprising learners who are brave, curious, optimistic, and kind. We are ready to embrace the future!

## The Graduated Approach and SEND Inclusion

At Hyde Park Schools, we are dedicated to ensuring that every child receives the support they need to thrive, regardless of their individual needs. Through our **graduated approach** to SEND (Special Educational Needs and Disabilities) and inclusion, we provide tailored support that is aligned with each child's unique requirements.

This approach follows a clear process of **assess, plan, do, and review**, ensuring that we consistently monitor and adjust the support provided to achieve the best possible outcomes for every pupil. We work closely with parents, carers, and external specialists to create personalised learning plans that enable children to reach their full potential.

Our policies and procedures are designed with inclusivity in mind, making sure that all pupils—whether they need additional learning support or specific interventions—feel valued and included in every aspect of school life.

Parents play a key role in this process, and we encourage open communication to ensure that your child's needs are met. If you have any concerns or feel your child may need extra support, please don't hesitate to contact **Mrs. Jennifer Hussey our SENDCO**. Together, we can provide the right support for every child to succeed.

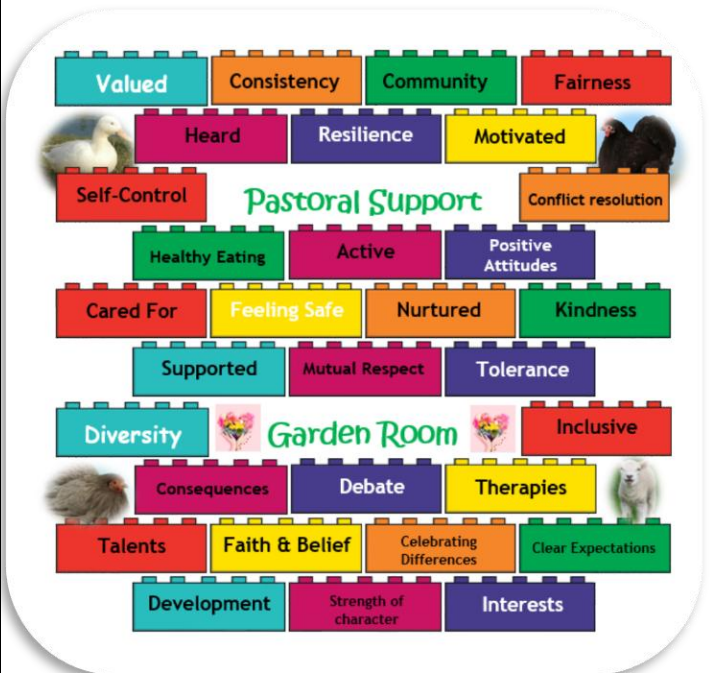


## Family Support Advisor

At Hyde Park Schools, we are fortunate to have a dedicated **Family Support Advisor** who is here to offer guidance and support to families. Our Family Support Advisor works closely with parents and carers, helping to address any challenges that may impact a child's well-being, learning, or development. Whether you need advice on parenting, assistance with routines at home, or help accessing external services, we are here to listen and offer practical solutions.

The goal is to build strong partnerships between school and home, ensuring that every child feels supported both in and outside of the classroom. If you ever have any concerns or need someone to talk to, our Family Support Worker **Mrs. Leisa Warne** is available to offer confidential support and advice tailored to your family's needs.

We encourage all families to reach out if they need assistance—together, we can work towards ensuring the best outcomes for your child.



KIND HANDS, KIND FEET, KIND WORDS, KIND ACTIONS



We are inclusive, confident, and enterprising learners who are brave, curious, optimistic, and kind. We are ready to embrace the future!

## A Reminder of Our School Values and Responsible Use of Social Media

At Hyde Park Schools, we prioritise fostering a positive and respectful environment that reflects our core values of **kindness, respect, and community**. As part of this, we want to remind parents about the impact of social media, including WhatsApp groups.

While these platforms can be helpful for staying connected, we kindly ask that any concerns or queries related to school matters be directed to your child's **class teacher** or the **Senior Leadership Team**, rather than discussed in group chats. This ensures that issues are addressed appropriately and in a timely manner, in line with our school's commitment to effective communication and the well-being of all pupils.

## Healthy Snacks and Lunches at Hyde Park Schools

At Hyde Park Schools, we encourage healthy eating to support our pupils' well-being and concentration throughout the day. Nutritious snacks and balanced lunches provide the energy children need to stay focused and ready to learn.

### Here are a few suggestions for healthy snacks and packed lunches:

**Snacks:** Fresh fruit, vegetable sticks (like carrots, cucumbers, or peppers), rice cakes, or wholegrain crackers.

**Lunches:** Wholegrain sandwiches or wraps with lean protein (such as chicken, turkey, or hummus), salads, yoghurts, and water or milk to drink.

We kindly ask parents to avoid sending sugary snacks or fizzy drinks, and instead opt for healthier choices that contribute to the children's overall health and energy levels.

Thank you for helping us promote a healthy and positive learning environment!

## KS2 Safeguarding Reminder

We are delighted with how quickly the Year 3 children have settled into their new routines. To continue ensuring the safety and security of our pupils, we kindly ask that Year 3 children enter the school through the **Junior gate on Hermitage Road** or around the side of the building from the infant playground. This helps us secure the site effectively in the mornings.

Now that the children are familiar with where to go, we ask parents to say goodbye at the **Hermitage Road gate or Infant Playground**. There will be staff at the gate to support any children who may need a little assistance walking into school.

Thank you to everyone for working with us at the end of the day in implementing the one way system. For parents with buggies, you can walk from the Infant playground to the side of KS2 and leave the buggy neatly at the side of the walkway and enter from there.

For any queries or concerns, please contact teachers via **Class Dojo** or the **school office**. Please remember that adults without an entrance pass in the building contravene our safeguarding procedures, which are in place to protect your children. Thank you for your understanding and cooperation.

Thank you for your continued support in upholding our school values both online and within our school community.

## Uniform Expectations at Hyde Park Schools

We would like to remind parents and pupils of the importance of adhering to our **uniform expectations** at all times. Maintaining a smart appearance is part of our school ethos and helps promote a sense of pride and unity among pupils.

**Uniform:** Pupils should wear the full school uniform as outlined in our guidelines.

**Hair accessories:** Hair accessories should be kept simple and in **school colours**.

**Braids:** Any braids should be **natural to hair colour**.

**Earrings:** For safety reasons, only **small stud earrings** are permitted.

Thank you for your continued cooperation in ensuring that our uniform standards are upheld throughout the school year.

KIND HANDS, KIND FEET, KIND WORDS, KIND ACTIONS



We are inclusive, confident, and enterprising learners who are brave, curious, optimistic, and kind. We are ready to embrace the future!

## Message from our PTFA

At this year's Annual General Meeting, we said a big thank you and farewell to our outgoing PTFA committee for their hard work, dedication, and countless contributions to our school community. A new committee have now been voted in, and they will continue to support the school through events, fundraising and community initiatives. The new team is keen to focus on growing an inclusive, friendly and thriving school community and is already busy planning activities for both children and parents for the year ahead. The team is looking forward to working closely with parents, staff, and the children to make this an exciting and successful year for everyone.

**Jo Deerman and Michaela Webber – Co-Chairs**

## HYDE PARK INFANTS' SCHOOL

### SEPTEMBER 2026 INTAKE

Join Us for Our Exclusive Open Days

Discover why Hyde Park Infants' School is the perfect place for your child to begin their educational journey. Experience our nurturing environment, meet our dedicated team, and see firsthand how we inspire young minds to flourish.

Wednesday 1 <sup>st</sup> October 5:00 PM	Thursday 9 <sup>th</sup> October 4:00 PM	Thursday 13 <sup>th</sup> Nov. 9:30 AM
--	---	---



*"At Hyde Park Infants' School, we believe every child deserves the very best start to their educational journey. Come and see how we make learning magical."*

#### What You'll Experience

- Meet our Executive Headteacher and Head of School
- Tour our inspiring learning environments
- Discover our innovative curriculum approach
- Learn about our admissions process
- See our nurturing facilities and resources
- Meet members of our Team

#### Booking Essential

Spaces are limited for each open day session. Please secure your place by contacting us as soon as possible.

Email: [office@hydeparkprimary.co.uk](mailto:office@hydeparkprimary.co.uk)

Telephone: 01752 225493

We look forward to welcoming you and your family to Hyde Park Infants' School!

✓ Making learning fun is at the heart of our teaching, fostering curiosity and joy in every lesson.

#### ♥ Nurturing Environment

We create a warm, caring atmosphere where every child feels valued, safe, and excited to learn. Our dedicated staff provide the emotional support young learners need to thrive.

#### ☆ Excellence in Education

Our innovative curriculum combines traditional values with modern teaching methods, ensuring your child develops strong foundations in literacy, numeracy, and creative thinking.

#### 👥 Strong Community

Join our vibrant school community where parents, teachers, and children work together. We believe that strong partnerships create the best outcomes for every child.

*A copy of our poster is available in the Reception area*



## October 2025

### Black History Month

#### Week 6- 6<sup>th</sup>- 10<sup>th</sup> October

#### Plymouth PANTS Week (6<sup>th</sup>- 10<sup>th</sup> October)

#### Year 6 Residential Week

Monday 6 <sup>th</sup>	World Habitat Day
Thursday 9 <sup>th</sup>	Open evening for prospective parents @4pm
Friday 10 <sup>th</sup>	World Mental Health Day
	World Homeless Day

#### Week 7 13<sup>th</sup>- 17<sup>th</sup> October

Friday 17 <sup>th</sup>	Culture Fest
	Deadline for Head Boy and Girl Applications *New Date*
	Wear Red Day- show racism the red card *New Date*

KIND HANDS, KIND FEET, KIND WORDS, KIND ACTIONS



We are inclusive, confident, and enterprising learners who are brave, curious, optimistic, and kind. We are ready to embrace the future!



September 22<sup>nd</sup> -26<sup>th</sup> 2025

<b>Keller</b>	Barnaby
<b>Nightingale</b>	Cooper
<b>Potter</b>	Olive
<b>Rosen</b>	Letty
<b>Astor</b>	Bethany
<b>Coleman</b>	Evie
<b>Pankhurst</b>	Sarah
<b>Scott</b>	Ruby
<b>Attenborough</b>	Rose
<b>Curie</b>	Layla
<b>Turing</b>	Charlie
<b>Hawking</b>	Ahmad
<b>Gandhi</b>	Sebby
<b>Anning</b>	Tom
<b>Mandela</b>	Akachi
<b>Tubman</b>	Ophelia
<b>The Base</b>	Bill
<b>Douglass</b>	Bobby
<b>King</b>	Freddie
<b>Seacole</b>	Sophie

### Nominations for being a Curious Learner

<b>Keller</b>	Lilith
<b>Nightingale</b>	Rupert
<b>Potter</b>	Naomi
<b>Rosen</b>	Ben
<b>Astor</b>	Arnav
<b>Coleman</b>	Albie
<b>Pankhurst</b>	Piran
<b>Scott</b>	Reuben
<b>Attenborough</b>	Roman
<b>Curie</b>	Jad
<b>Turing</b>	Leo
<b>Hawking</b>	Jeshive
<b>Gandhi</b>	Abigail
<b>Anning</b>	Jago
<b>Mandela</b>	Isaac W
<b>Tubman</b>	Coco C
<b>The Base</b>	Makil
<b>Douglass</b>	Ben
<b>King</b>	Tiana
<b>Seacole</b>	Eleanor

KIND HANDS, KIND FEET, KIND WORDS, KIND ACTIONS



We are inclusive, confident, and enterprising learners who are brave, curious, optimistic, and kind. We are ready to embrace the future!



September 29<sup>th</sup> - October 3<sup>rd</sup> 2025

<b>Keller</b>	Bonnie
<b>Nightingale</b>	Ivor T
<b>Potter</b>	Tabby
<b>Rosen</b>	Aarya
<b>Astor</b>	Wisdom
<b>Coleman</b>	Janvia
<b>Pankhurst</b>	Reign
<b>Scott</b>	Joshua
<b>Attenborough</b>	Hank
<b>Curie</b>	phoebe
<b>Turing</b>	Sonny
<b>Hawking</b>	Lily
<b>Gandhi</b>	Hazel
<b>Anning</b>	Ezra
<b>Mandela</b>	Rozi
<b>Tubman</b>	Izzy B
<b>The Base</b>	Isabella
<b>Douglass</b>	Harrison
<b>King</b>	Alex
<b>Seacole</b>	Henry B

### Nominations for being an Optimistic Learner

<b>Keller</b>	Delilah
<b>Nightingale</b>	Eleanor
<b>Potter</b>	Theo
<b>Rosen</b>	Elliot
<b>Astor</b>	Bethany
<b>Coleman</b>	Savanna
<b>Pankhurst</b>	Jensen
<b>Scott</b>	Holly
<b>Attenborough</b>	Emily
<b>Curie</b>	Atalia
<b>Turing</b>	Flora
<b>Hawking</b>	Freya
<b>Gandhi</b>	Lennon
<b>Anning</b>	Bernardo
<b>Mandela</b>	Aliya-Grace
<b>Tubman</b>	Rhoda
<b>The Base</b>	Alana
<b>Douglass</b>	Kaitlyn
<b>King</b>	Nikita
<b>Seacole</b>	Juvana

KIND HANDS, KIND FEET, KIND WORDS, KIND ACTIONS

